

DESIGNED & DIMENSIONED
IN INCHES[MILLIMETERS]

DO NOT
SCALE FROM
THIS PRINT

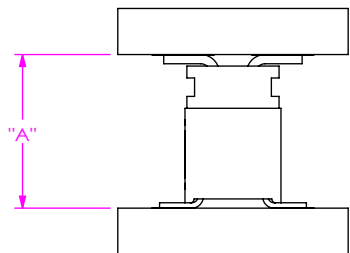


FIG 1
CLE-01-DV MATED WITH FTE-DV

		TABLE 1			
		CLE-01-DV		WIPE	
		"A" FULLY MATED	"A" MAX	FULLY MATED	MIN
FTE-DV LEAD STYLE	-01	.200 [5.08]	.216 [5.49]	.031 [0.79]	.015 [0.38]
	-02	.245 [6.22]	.316 [8.03]	.086 [2.18]	.015 [0.38]
	-03	.200 [5.08]	.261 [6.63]	.076 [1.93]	.015 [0.38]

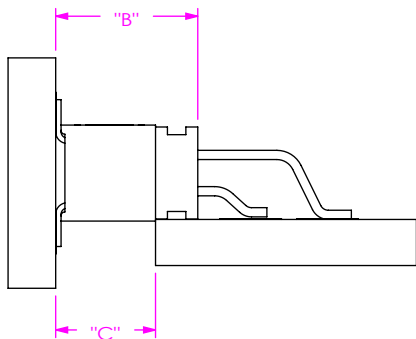


FIG 2
CLE-01-DV MATED WITH FTE-DH

		TABLE 2					
		CLE-01-DV				WIPE	
		"B" FULLY MATED	"B" MAX	"C" FULLY MATED	"C" MAX	FULLY MATED	MIN
FTE-DH LEAD STYLE	-01	.185 [4.70]	.201 [5.11]	.130 [3.30]	.146 [3.71]	.031 [0.79]	.015 [0.38]
	-02	.230 [5.84]	.301 [7.65]	.175 [4.45]	.246 [6.25]	.086 [2.18]	.015 [0.38]
	-03	.185 [4.70]	.246 [6.25]	.130 [3.30]	.191 [4.85]	.076 [1.93]	.015 [0.38]

NOTES:

1. ALL DIMENSIONS BASED ON NOMINAL VALUES FOR SAMTEC RECOMMENDED PCB LAYOUTS.
2. ALTHOUGH MAX DIMENSION ARE LISTED SAMTEC RECOMMENDS FULLY MATING COMPONENTS.

PROPRIETARY NOTE
THIS DOCUMENT CONTAINS CONFIDENTIAL AND PROPRIETARY INFORMATION AND ALL DESIGN, MANUFACTURING, REPRODUCTION, USE, PATENT RIGHTS AND SALES RIGHTS ARE EXPRESSLY RESERVED BY SAMTEC, INC. THIS DOCUMENT SHALL NOT BE DISCLOSED, IN WHOLE OR PART, TO ANY UNAUTHORIZED PERSON OR ENTITY NOR REPRODUCED, TRANSFERRED OR INCORPORATED IN ANY OTHER PROJECT IN ANY MANNER WITHOUT THE EXPRESS WRITTEN CONSENT OF SAMTEC, INC.



520 PARK EAST BLVD, NEW ALBANY, IN 47150
PHONE: 812-944-6733 FAX: 812-948-5047
e-Mail: info@SAMTEC.com code: 55322